


# Swivel castor 530 11x30 75 P

Furniture Castors Series 530 ST - Wheel P

 -20 °C - +60 °C

  
swivels easily

  
wear resistant

  
shock proof

  
floor protective

  
weather proof

## Wheel

Casted high quality nylon wheel black

High quality nylon housing - black

Swivel bearing with combined  
plain-ball bearing

Wheel brake - glass fibre reinforced

Wheel axle revited

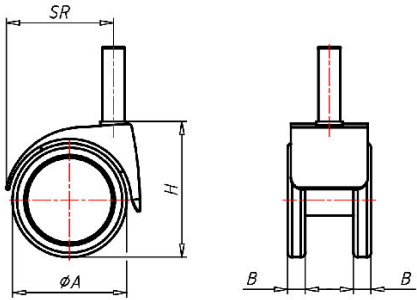
Swivel castor	Wheel-Ø A x width B mm: 75x13+13
Load Capacity kg:	60
Load capacity tested according to EN 12530 and EN 12527	
Overall height H mm:	93
Stern mm:	11x30
Swivel radius SR mm:	71
Wheel bearing:	Nylon plain bearing

## Advantages

- ✓ easy running on smooth floors
- ✓ impact proof
- ✓ high abrasion resistance
- ✓ easy to clean
- ✓ high chemical resistance

©Copyright 2024 Rollenbau GmbH, [www.rollenbau.at](http://www.rollenbau.at) 20.05.2024

 ROLLENBAU



## Applications

- Health-Professionals